

SPIRAL LOCK





**SPIRAL LOCK** is the new connecting fitting, strong and with a very long fastening travel, especially conceived to join bed sides and panels. Consisting of a threaded M8 dowel and of a cylindric joint, **SPIRAL LOCK** guarantees a strong fastening function without damaging the housing into the panel. This is made possible by the particular plastic cap which features the cylindric joint, thus maximising the resistance. An inner anti-rotating device guarantees the steadiness of the joint and therefore its extremely long efficiency.

**SPIRAL LOCK** can be mounted on relatively thin panels, with a minimum thickness of 19mm. The locking function can be carried out with an exagonal S6 key or even faster with a cordless screwdriver. The fastening travel is minimum 5 mm.

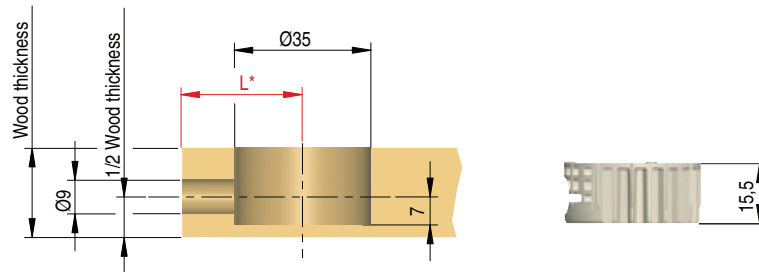
**SPIRAL LOCK** is also conceived for installation through automatic machinery.

Zinc-plated steel, zinc alloy, engineering plastic.



Part. no	Description	Part. no	Description	Finish
2162402000	Spiral lock Ø 35	23011010AB	Cover cap Ø 35	White
		23011010MK	Cover cap Ø 35	Brown

## DRILLING PLAN

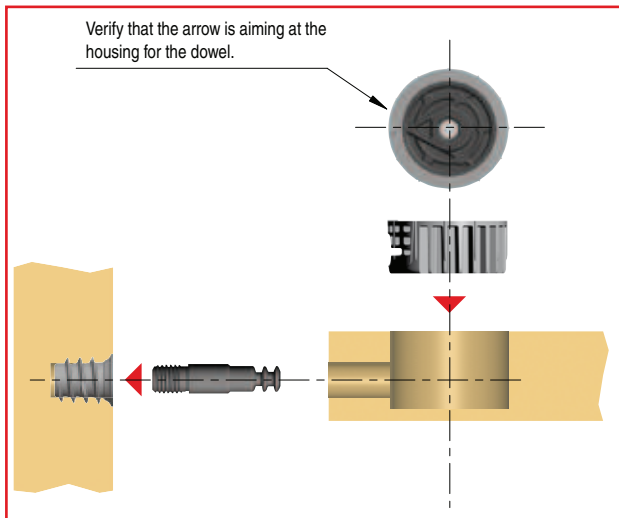


\* L measurement varies according to the dowel used (see related page).

## APPLICATION

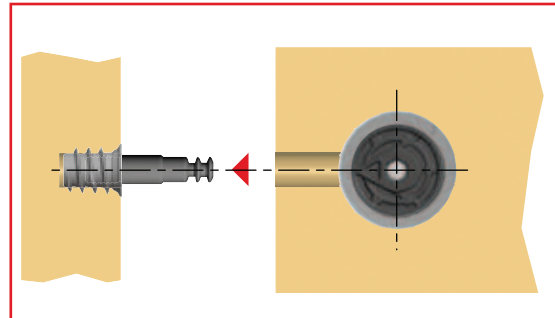
**1**

INSTALLATION OF COMPONENTS.



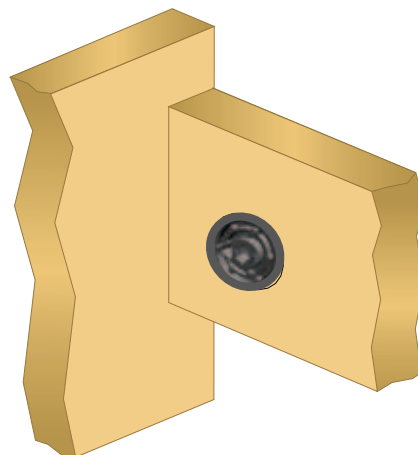
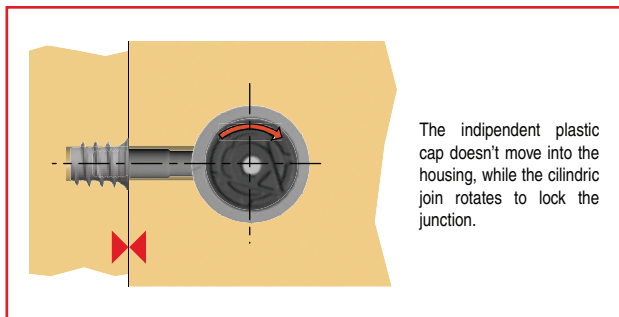
**2**

CONNECT THE TWO PANELS.

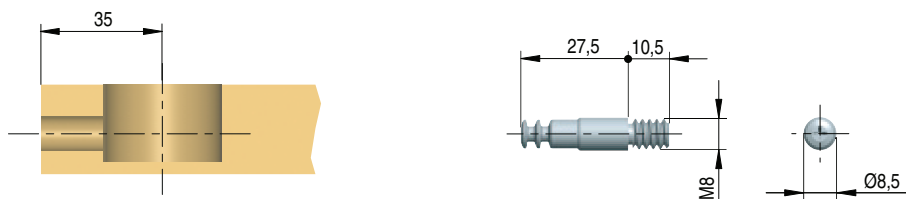


**3**

LOCK THE JUNCTION.



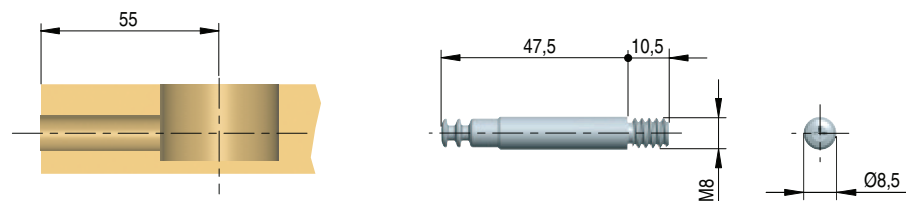
## SHORT M8 DOWEL L. 27,5mm



Steel

Part. no	Finish
21624030ZN	Zinc-plated

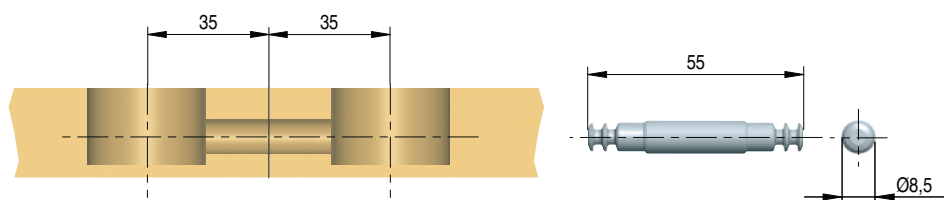
## LONG M8 DOWEL L. 47,5mm



Steel

Part. no	Finish
21624050ZN	Zinc-plated

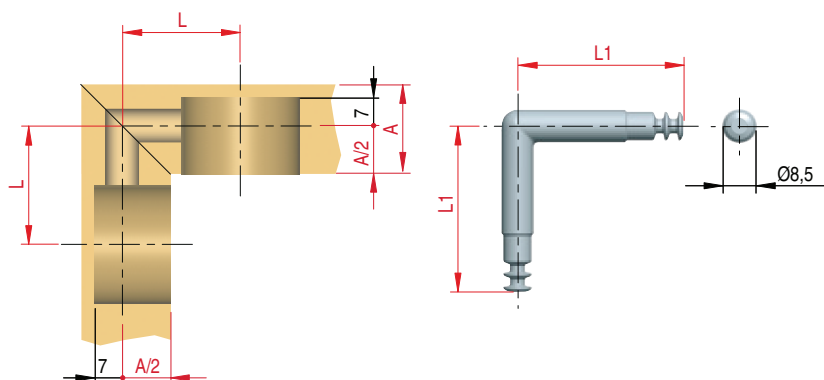
## DOUBLE CONNECTING DOWEL L. 55mm



Steel

Part. no	Finish
21624070ZN	Zinc-plated

## 90° DOUBLE CONNECTING DOWEL

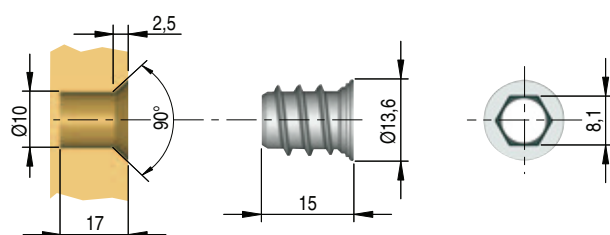


Steel

Part. no	L	L1	Finish
21624080ZN	50	42,5	Zinc-plated
21624090ZN	70	62,5	Zinc-plated

A = Wood thickness

## INSERT NUT



M8 with countersunk head  
Zinc alloy

Part. no	Finish
20103010GR	Plain

